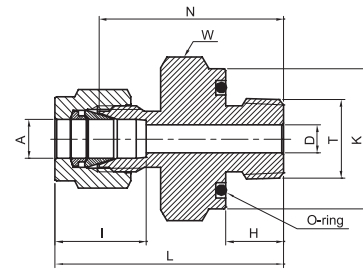


MALE CONNECTOR

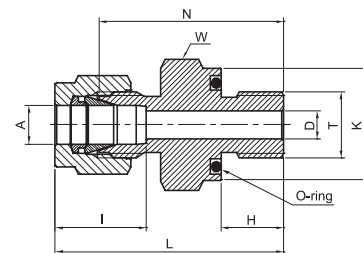
TMC



O-SEAL NPT TAPERED THREAD																		
Part Number	A Tube O.D.		T NPT Short	D		K		W Hex. flat		N		H		L		I		O-ring*
	in	mm	in	in	mm	in	mm	in	mm	in	mm	in	mm	in	mm	in	mm	
TMC - 2 - 2NOR	1/8	3.17	1/8	0.09	2.28	0.74	18.79	3/4	19.1	1.03	26.16	0.28	7.11	1.29	32.76	0.50	12.7	-111
TMC - 4 - 2NOR	1/4	6.35	1/8	0.19	4.82	0.74	18.79	3/4	19.1	1.09	27.70	0.28	7.11	1.38	35.05	0.60	15.3	-111
TMC - 4 - 4NOR	1/4	6.35	1/4	0.19	4.82	0.93	23.62	15/16	23.8	1.22	31.00	0.38	9.65	1.51	38.40	0.60	15.3	-113
TMC - 6 - 4NOR	3/8	9.52	1/4	0.28	7.11	0.93	23.62	15/16	23.8	1.28	32.51	0.38	9.65	1.57	39.88	0.66	16.9	-113
TMC - 6 - 6NOR	3/8	9.52	3/8	0.28	7.11	1.12	28.45	1-1/8	28.6	1.34	34.04	0.41	10.41	1.63	41.40	0.66	16.9	-116
TMC - 6 - 8NOR	3/8	9.52	1/2	0.28	7.11	1.30	33.02	1-5/16	33.3	1.56	39.62	0.53	13.46	1.85	46.99	0.66	16.9	-212
TMC - 8 - 8NOR	1/2	12.70	1/2	0.41	10.41	1.30	33.02	1-5/16	33.3	1.56	39.62	0.53	13.46	1.96	49.78	0.90	22.9	-212

MALE CONNECTOR

TMC



O-SEAL MALE UNF THREAD																		
Part Number	A Tube O.D.		T Unif ied Screw	D		K		W Hex. flat		N		H		L		I		O-ring*
	in	mm	in	in	mm	in	mm	in	mm	in	mm	in	mm	in	mm	in	mm	
TMC - 1 - 2OR	1/16	1.58	5/16-24	0.05	1.27	0.55	14.0	9/16	14.3	0.90	22.86	0.34	8.63	1.05	26.67	0.34	8.6	-011
TMC - 2 - 2OR	1/8	3.17	5/16-24	0.09	2.28	0.55	14.0	9/16	14.3	1.03	26.20	0.34	8.63	1.29	32.77	0.50	12.7	-011
TMC - 3 - 3OR	3/16	4.76	3/8-24	0.12	3.04	0.62	15.75	5/8	15.9	1.09	27.70	0.38	9.65	1.35	34.29	0.54	13.7	-012
TMC - 4 - 4OR	1/4	6.35	7/16-20	0.19	4.22	0.74	18.80	3/4	19.1	1.22	31.00	0.41	10.41	1.51	38.35	0.60	15.3	-111
TMC - 5 - 5OR	5/16	7.93	1/2-20	0.25	6.35	0.86	21.84	7/8	22.2	1.31	33.30	0.44	11.17	1.60	40.64	0.64	16.2	-112
TMC - 6 - 6OR	3/8	9.52	9/16-18	0.28	7.11	0.93	23.62	15/16	23.8	1.38	35.05	0.47	11.93	1.67	40.89	0.66	16.9	-113
TMC - 8 - 8OR	1/2	12.70	3/4-16	0.41	10.41	1.12	28.45	1-1/8	28.6	1.41	35.81	0.47	11.93	1.81	45.77	0.90	22.9	-116
TMC - 12 - 12OR	3/4	19.05	1-1/16-12	0.62	15.74	1.49	37.85	1-1/2	38.1	1.66	42.20	0.56	14.22	2.06	52.32	0.96	24.5	-215
TMC - 16 - 16OR	1	25.40	1-5/16-12	0.88	22.35	1.74	44.20	1-3/4	44.5	1.81	45.97	0.56	14.22	2.29	58.17	1.23	31.2	-219

"D" - Dimension is minimum opening - dimensions are for reference only, and are subject to change without notice.

* O-Rings used are NBR (Perbunan®) 70 Durometer.