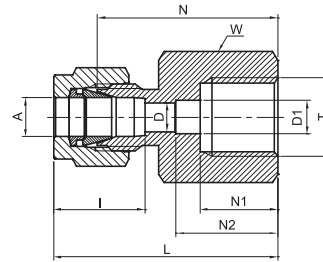


# FEMALE CONNECTOR

TFC

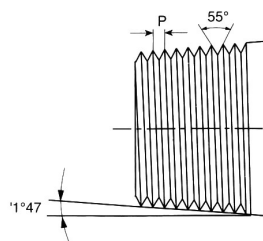


TUBE (METRIC) TO FEMALE ISO PARALLEL THREAD													
Part Number	A Tube O.D.		T ISO	D	D1		W Hex. flat	N	N1	N2		L	I
	mm	in	in	mm	mm	mm	mm	mm	mm	mm	mm	mm	mm
TFC - 3M - 4RG	3		G 1/4	2.4	0.22	5.5	19	28.7	13	0.67	17.0	35.3	12.9
TFC - 6M - 4RG	6		G 1/4	4.8	0.22	5.5	19	30.2	13	0.67	17.0	37.6	15.3
TFC - 6M - 6RG	6		G 3/8	4.8	0.26	6.5	24	30.2	16	0.80	20.3	37.6	15.3
TFC - 6M - 8RG	6		G 1/2	4.8	0.28	7.0	27	36.3	19	0.98	24.9	43.0	15.3
TFC - 8M - 4RG	8		G 1/4	5.5	-	-	19	31.0	13	-	-	38.5	16.2
TFC - 8M - 6RG	8		G 3/8	6.5	-	-	24	28.7	16	-	-	36.2	16.2
TFC - 8M - 8RG	8		G 1/2	7.0	-	-	27	33.0	19	-	-	40.5	16.2
TFC - 10M - 4RG	10		G 1/4	5.5	-	-	19	31.8	13	-	-	39.4	17.2
TFC - 10M - 6RG	10		G 3/8	6.5	-	-	24	31.2	16	-	-	38.8	17.2
TFC - 10M - 8RG	10		G 1/2	7.0	-	-	27	34.5	19	-	-	41.4	17.2
TFC - 12M - 4RG	12		G 1/4	5.5	-	-	22	31.8	13	-	-	41.9	22.8
TFC - 12M - 6RG	12		G 3/8	6.5	-	-	24	34.3	16	-	-	44.4	22.8
TFC - 12M - 8RG	12		G 1/2	7.0	-	-	27	38.1	19	-	-	48.2	22.8
TFC - 20M - 8RG	20		G 1/2	7.0	-	-	30	44.2	19	-	-	54.3	26.0
TFC - 22M - 8RG	22		G 1/2	7.0	-	-	30	44.2	19	-	-	54.3	26.0

TUBE (INCH) TO FEMALE ISO PARALLEL THREAD																			
Part Number	A Tube O.D.		T ISO	D		D1		W Hex. flat		N		N1		N2		L		I	
	in	mm	in	in	mm	in	mm	in	mm	in	mm	in	mm	in	mm	in	mm	in	mm
TFC - 4 - 4RG	1/4	6.35	G 1/4	0.19	4.82	0.22	5.5	3/4	19.1	1.19	30.22	0.51	13	0.67	17.0	1.48	37.59	0.60	15.3
TFC - 4 - 6RG	1/4	6.35	G 3/8	0.19	4.82	0.26	6.5	15/16	23.8	1.19	30.22	0.63	16	0.80	20.3	1.48	37.59	0.60	15.3
TFC - 4 - 8RG	1/4	6.35	G 1/2	0.19	4.82	0.28	7.0	1-1/16	27.0	1.18	30.07	0.75	19	0.98	24.9	1.71	43.43	0.60	15.3
TFC - 5 - 4RG	5/16	7.93	G 1/4	0.22	5.5	-	-	3/4	19.1	1.22	30.98	0.51	13	-	-	1.51	38.35	0.64	16.3
TFC - 5 - 8RG	5/16	7.93	G 1/2	0.28	7.0	-	-	1-1/16	27.0	1.30	33.02	0.75	19	-	-	1.59	40.38	0.64	16.3
TFC - 6 - 4RG	3/8	9.52	G 1/4	0.22	5.5	-	-	3/4	19.1	1.25	31.75	0.51	13	-	-	1.54	39.12	0.66	16.9
TFC - 6 - 6RG	3/8	9.52	G 3/8	0.26	6.5	-	-	15/16	23.8	1.23	31.24	0.63	16	-	-	1.52	38.61	0.66	16.9
TFC - 6 - 8RG	3/8	9.52	G 1/2	0.28	7.0	-	-	1-1/16	27.0	1.36	34.54	0.75	19	-	-	1.65	41.91	0.66	16.9
TFC - 8 - 4RG	1/2	12.7	G 1/4	0.22	5.5	-	-	7/8	22.2	1.25	31.8	0.51	13	-	-	1.65	41.95	0.9	22.9
TFC - 8 - 6RG	1/2	12.7	G 3/8	0.26	6.5	-	-	15/16	23.8	1.35	34.29	0.63	16	-	-	1.75	44.45	0.9	22.9
TFC - 8 - 8RG	1/2	12.7	G 1/2	0.28	7.0	-	-	1-1/16	27.0	1.50	38.10	0.75	19	-	-	1.90	48.26	0.9	22.9

Reference Specifications :

- DIN - ISO 2999 •55° Thread angle
- BS - 21 •Truncation of root and crest are round
- JIS - B0203 •Taper angle 1° 47'



"D" - Dimension is minimum opening - dimensions are for reference only, and are subject to change without notice.