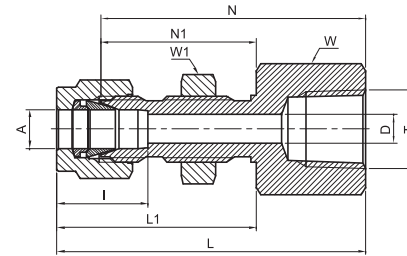


TUBE FITTINGS |

BULKHEAD FEMALE CONNECTOR

TBFC



TUBE (INCH) TO MALE NPT THREAD																							
Part Number	A Tube O.D.		T	D		W Hex. flat		W1 Hex. flat		N		N1		L		L1		I		Panel hole drill size		Max. panel thickness	
	in	mm		in	in	mm	in	mm	in	mm	in	mm	in	mm	in	mm	in	mm	in	mm	in	mm	in
TBFC - 2 - 2N	1/8	3.17	1/8	.09	2.28	9/16	14.3	1/2	12.7	1.50	38.10	0.97	24.63	1.76	44.70	1.23	31.24	0.50	12.7	21/64	8.33	0.50	12.70
TBFC - 4 - 2N	1/4	6.35	1/8	.19	4.82	5/8	15.9	5/8	15.9	1.56	39.62	1.03	26.16	1.85	46.99	1.32	33.52	0.60	15.3	29/64	11.50	0.40	10.16
TBFC - 4 - 4N	1/4	6.35	1/4	.19	4.82	3/4	19.1	5/8	15.9	1.75	44.45	1.03	26.16	2.04	51.81	1.32	33.52	0.60	15.3	29/64	11.50	0.40	10.16
TBFC - 6 - 4N	3/8	9.52	1/4	.28	7.11	3/4	19.1	3/4	19.1	1.88	47.75	1.16	29.46	2.17	55.11	1.45	36.83	0.66	16.9	37/64	14.68	0.44	11.17
TBFC - 8 - 6N	1/2	12.70	3/8	.41	10.41	15/16	23.8	15/16	23.8	2.03	51.56	1.25	31.75	2.43	61.72	1.65	41.91	0.90	22.9	49/64	19.44	0.50	12.70
TBFC - 8 - 8N	1/2	12.70	1/2	.41	10.41	1-1/16	27.0	15/16	23.8	2.22	56.38	1.25	31.75	2.62	66.54	1.65	41.91	0.90	22.9	49/64	19.44	0.50	12.70
TBFC - 12 - 12N	3/4	19.05	3/4	.62	15.74	15/16	23.81	1-5/16	33.33	2.50	63.60	1.51	38.30	2.89	73.51	2.89	47.21	0.96	24.38	1-1/64	25.79	0.66	16.76