

HFRG SERIES



HIGH FLOW REGULATOR

- A regulator for the control of high purity, corrosive, toxic, flammable and inert gases at high flow rate and low pressure.
- Every step of assembly, welding, testing and final cleaning finished in Class 100 Cleanrooms.

SPECIFICATIONS

Fluid Media

A regulator for the control of high purity, corrosive, toxic, flammable and inert gases at high flow rate and low pressure.

Pressure Rating (Per criteria of ANSI / ASME B31.3.)

Max. rated inlet pressure	200, 500 PSIG
Outlet pressure ranges	1-30, 2-75 and 5-150 PSIG
Design proof pressure	150% of Maximum rated pressure

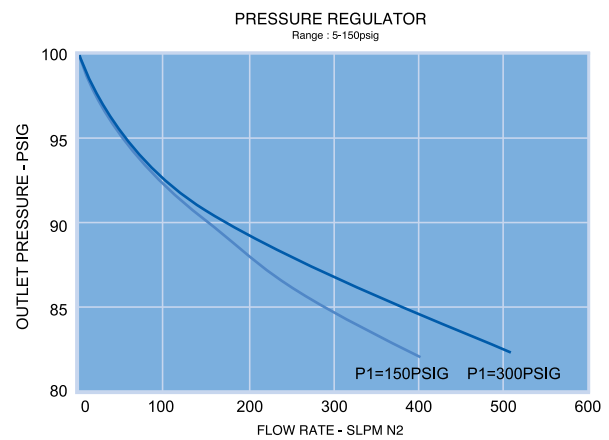
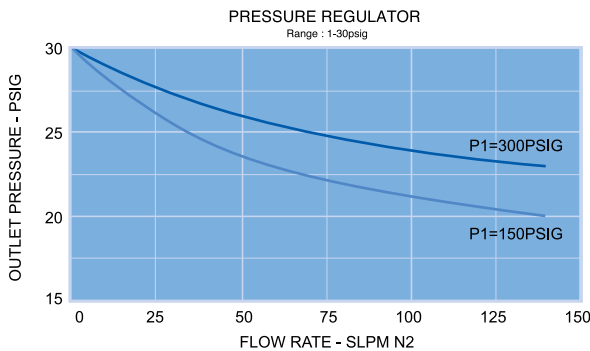
Materials in Contact with Media

Body	316L Stainless Steel
Seat	FKM (Contact manufacturer for the use of toxic gas)
Diaphragm	PTFE
Gas contact parts	316L Stainless Steel with BA, Electropolish

Other Parameters

Flow coefficient	Cv = 0.85
Inboard leak rate	2×10^{-8} scc / sec He
Temperature	-15°F to +165°F (-26°C to +73°C)

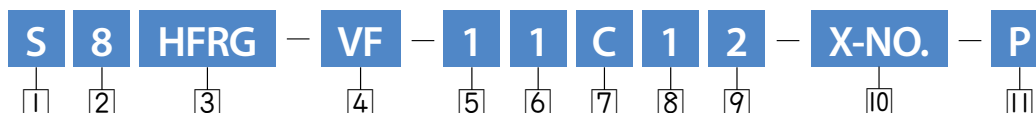
FLOW CURVES



MATERIAL

Wetted Parts	HFRG Series
Body	316L Stainless Steel
Main Valve	316L Stainless Steel
Valve Spring	316 Stainless Steel
Seat	FKM
Diaphragm	PTFE

ORDERING INFORMATION



1	Material	S = 316L Stainless steel D = 316L Stainless steel VAR	
2	Connection Size	4 = 1/4" 6 = 3/8" 8 = 1/2"	
3	Product	HFRG SERIES	
4	Connection Type	NF = Female NPT Thread SW = Compression Lok Fitting TW = Tube Butt Weld	VF = Female Type Face Seal VM = Male Type Face Seal VMF = Fixed Male Type Face Seal
5	Maximum Inlet Pressure	1 = 500 PSIG 2 = 200 PSIG	
6	Maximum Range of Inlet Gauge	1 = 300 PSIG 2 = 600 PSIG Blank = No Gauge	
7	Gauge Port Configuration	A = NONE (fig. A) B = 1/4" Internal Face Seal (fig. C) C = 1/4" Internal Face Seal (fig. B) D = 1/4" Internal Face Seal (fig. D) E = 1/4" Male Face Seal (fig. D) F = 1/4" Male Face Seal (fig. C) G = 1/4" Male Face Seal (fig. B) H = 1/4" Female Face Seal (fig. D)	I = 1/4" Female Face Seal (fig. C) J = 1/4" Female Face Seal (fig. B) K = 1/4" Fixed Male Face Seal (fig. B) L = 1/4" Fixed Male Face Seal (fig. C) M = 1/4" Fixed Male Face Seal (fig. D) N = 1/4" Female NPT Thread (fig. B) O = 1/4" Female NPT Thread (fig. C) P = 1/4" Female NPT Thread (fig. D)
8	Outlet Pressure Range	0 = 1 ~ 30 PSIG 1 = 2 ~ 75 PSIG 2 = 5 ~ 150 PSIG	
9	Maximum Range of Outlet Gauge	0 = 30 PSIG 1 = 100 PSIG 2 = 160 PSIG 3 = 60 PSIG Blank = No Gauge	
10	User Option	Customization (※Standard:Blank)	
11	Grade	Blank = BA Standard (10 Ra μinch) P = Electropolishing (5 Ra μinch)	

GAUGE PORT INFORMATION

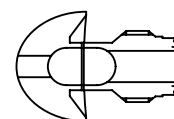
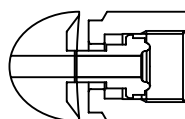
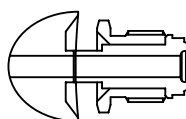
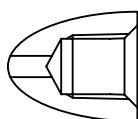
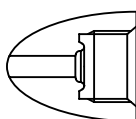
1/4" INTERNAL FACE SEAL

1/4" FEMALE NPT THREAD

1/4" MALE FACE SEAL

1/4" FEMALE FACE SEAL

1/4" FIXED MALE FACE SEAL



PORT CONFIGURATION

