

# HFRG2 SERIES



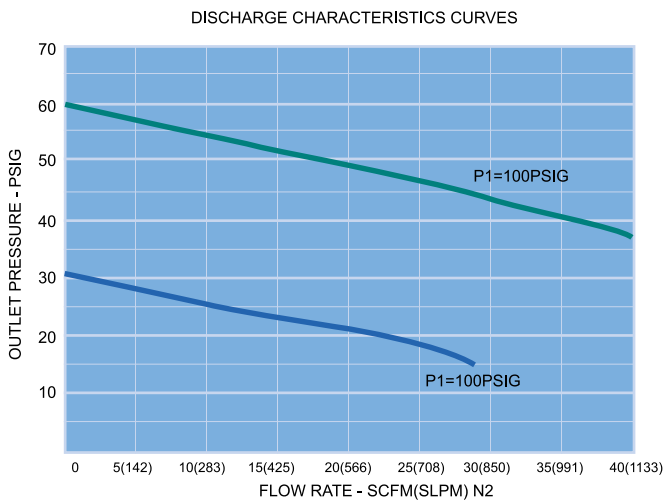
## HIGH FLOW REGULATOR

- A regulator for the control of high purity, corrosive, toxic, flammable and inert gases at high flow rate and low pressure.
- Metal to metal diaphragm seals provide enhances leak tight integrity.
- Every step of assembly, welding, testing and final cleaning finished in Class 100 Cleanrooms.

## SPECIFICATIONS

Pressure Rating	
Max. rated inlet pressure	150 or 250 PSIG
Outlet pressure ranges	1-30, 1-60, 1-100 PSIG
Design proof pressure	150% of Maximum rated pressure
Materials in Contact with Media	
Body	316L Stainless Steel
Seat	PFA
Diaphragm	Hastelloy C-22
Gas contact parts	316L Stainless Steel
Other Parameters	
Flow coefficient	Cv = 1.6
Certified maximum inboard leak rate	1 x 10 <sup>-9</sup> atm cc / sec He
Internal Surface Finish	5 Ra or 10 Ra microinch
Operating temperature	-15°F to 200°F (-26°C to 93°C)
Weight (w/o gauges)	3.5lbs. (1.6kg)

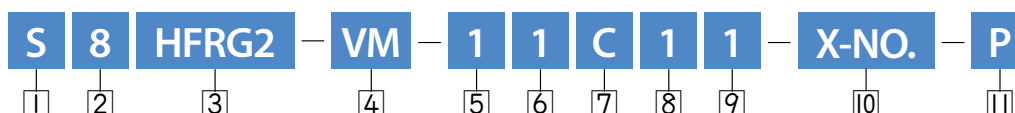
## FLOW CURVES



## MATERIAL

Wetted Parts	HFRG2 Series
Body	316L Stainless Steel
Seat Holder	316L Stainless Steel
Main Valve	316L Stainless Steel
Valve Spring	316 Stainless Steel
Seat	PFA
Diaphragm	Hastelloy C-22

## ORDERING INFORMATION



<b>1</b> Material	S = 316L Stainless steel D = 316L Stainless steel VAR	
<b>2</b> Connection Size	4 = 1/4" 6 = 3/8" 8 = 1/2" 12 = 3/4"	
<b>3</b> Product	HFRG2 SERIES	
<b>4</b> Connection Type	TW = Tube Butt Weld VF = Female Type Face Seal VM = Male Type Face Seal	VMF = Fixed Male Type Face Seal SW = Compression Lok Fitting VCO = VCO Type Face Seal
<b>5</b> Maximum Inlet Pressure	1 = 250 PSIG 2 = 150 PSIG	
<b>6</b> Maximum Range of Inlet Gauge	1 = 200 PSIG 2 = 300 PSIG Blank = No Gauge	
<b>7</b> Gauge Port Configuration	A = NONE (fig. A) B = 1/4" Internal Face Seal (fig. C) C = 1/4" Internal Face Seal (fig. B) D = 1/4" Internal Face Seal (fig. D) E = 1/4" Male Face Seal (fig. D) F = 1/4" Male Face Seal (fig. C) G = 1/4" Male Face Seal (fig. B) H = 1/4" Female Face Seal (fig. D)	I = 1/4" Female Face Seal (fig. C) J = 1/4" Female Face Seal (fig. B) K = 1/4" Fixed Male Face Seal (fig. B) L = 1/4" Fixed Male Face Seal (fig. C) M = 1/4" Fixed Male Face Seal (fig. D) N = 1/4" Female NPT Thread (fig. B) O = 1/4" Female NPT Thread (fig. C) P = 1/4" Female NPT Thread (fig. D)
<b>8</b> Outlet Pressure Range	0 = 1 ~ 30 PSIG 1 = 1 ~ 60 PSIG 2 = 1 ~ 100 PSIG	
<b>9</b> Maximum Range of Outlet Gauge	0 = 30 PSIG 1 = 60 PSIG 2 = 100 PSIG	3 = 160 PSIG Blank = No Gauge
<b>10</b> User Option	Customization (※Standard:Blank)	
<b>11</b> Grade	Blank = BA Standard (10 Ra μinch) P = Electropolishing (5 Ra μinch)	

## GAUGE PORT INFORMATION

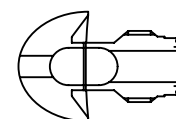
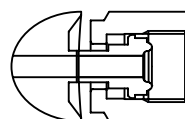
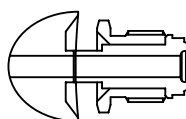
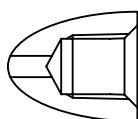
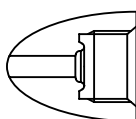
1/4" INTERNAL FACE SEAL

1/4" FEMALE NPT THREAD

1/4" MALE FACE SEAL

1/4" FEMALE FACE SEAL

1/4" FIXED MALE FACE SEAL



## PORT CONFIGURATION

