

MRG5 SERIES



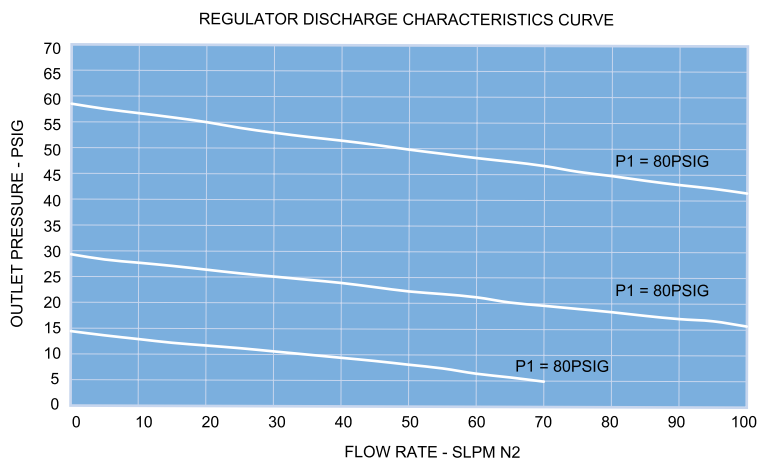
MIRCRO REGULATOR

- Compact size
- High performance with low hysteresis.
- All internal surfaces are finished with 10Ra or 5Ra to ensure minimal particle generation and entrapment. Metal-to-metal diaphragm seals provide enhanced leak tight integrity.
- Every step of assembly, welding, testing and final cleaning finished in Class 100 Cleanrooms.

SPECIFICATIONS

Pressure Rating	
Max. rated inlet pressure	500 PSIG
Outlet pressure	1-30, 1-60, 1-100 PSIG
Design proof pressure	150% of Maximum rated pressure
Materials in Contact with Media	
Body	316L Stainless Steel
Seat	PCTFE
Diaphragm	Hastelloy C-22
Gas contact parts	316L Stainless Steel / Hastelloy C-22
Other Parameters	
Flow coefficient	Cv = 0.1
Temperature	-40°C to +71°C
Inboard leak rate	1 x 10 ⁻⁹ atm cc / sec He
Weight (w/o gauges)	0.82lbs. (370g)

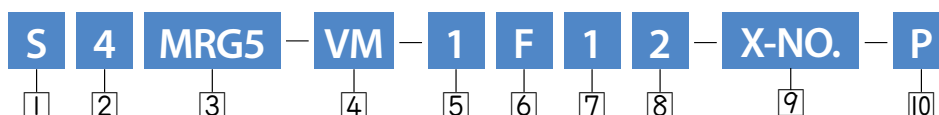
FLOW CURVES



MATERIAL

Wetted Parts	MRG5 Series
Body	316L Stainless Steel
Seat Holder	316L Stainless Steel Hastelloy C-22
Main Valve	316L Stainless Steel Hastelloy C-22
Valve Spring	316 Stainless Steel Inconel 750
Seat	PCTFE
Diaphragm	Hastelloy C-22

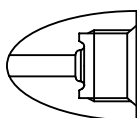
ORDERING INFORMATION



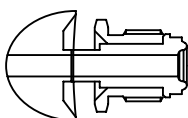
1 Material	S = 316L Stainless steel SH = 316L Stainless steel with Hastelloy internals DH = 316L Stainless steel VAR with Hastelloy internals
2 Connection Size	4 = 1/4"
3 Product	MRG5 Series
4 Connection Type	TW = Tube Butt Weld VF = Female Type Face Seal VM = Male Type Face Seal VMF = Fixed Male Type Face Seal
5 Maximum Inlet Pressure	1 = 500 PSIG
6 Gauge Port Configuration	A = No Gauge Port (Fig. A) B = 1/4" Male Face Seal (Fig. B) C = 1/4" Female Face Seal (Fig. B) D = 1/4" Fixed Male Face Seal (Fig. B) E = 1/4" Internal Face Seal (Fig. C) F = 1/4" Male Face Seal (Fig. C) G = 1/4" Female Face Seal (Fig. C) H = 1/4" Fixed Male Face Seal (Fig. C)
7 Outlet Pressure Range	0 = 1~ 30 PSIG 1 = 1~ 60 PSIG 2 = 1~100 PSIG
8 Maximum Range of Outlet Gauge	0 = 30 PSIG 1 = 60 PSIG 2 = 100 PSIG Blank = No Gauge
9 User Option	Customization (※Standard : Blank)
10 Grade	Blank = BA Standard (10 Ra μinch) P = Electropolishing (5 Ra μinch) PX = Electropolishing (5 Ra μinch)

GAUGE PORT INFORMATION

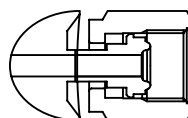
1/4" INTERNAL FACE SEAL



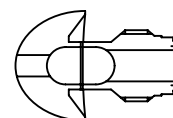
1/4" MALE FACE SEAL



1/4" FEMALE FACE SEAL



1/4" FIXED MALE FACE SEAL



PORT CONFIGURATION

