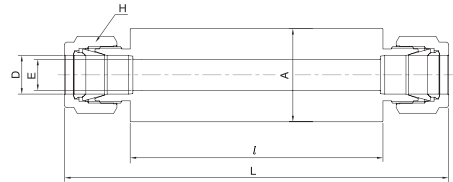


Welding Bulkhead Union DBUW



Connects fractional tubes

Part No.	Tube O.D. D		E Min.	A Diameter	Width across flat H		l	L
	in	mm			in	mm		
DBUW-4	1/4	6.35	4.8	16.0	9/16	14.28	80.0	115.4
DBUW-6	3/8	9.52	7.1	19.0	11/16	17.46	80.0	118.4
DBUW-8	1/2	12.70	10.41	22.0	7/8	22.22	80.0	124.0

Dk-Lok Welding information

Dk-Lok weld ends are constructed to SCH. 80 or greater.

1. Remove the nut and ferrules from the Dk-Lok port.
 - This protects the nut and ferrules from weld heat.
2. Cover the Dk-Lok port threads with a protective device such as Dk-Lok Plug (DP).
 - This protects threads and sealing surface on the Dk-Lok port.
 - Finger-tighten the DP to use it many times.
3. Tack weld at four positions 90 degree apart.
 - This holds the fitting in alignment and concentricity.
4. Complete the welding.
5. Remove the protective device and replace the nut and ferrules.